



September 2025

THE PONTCHARTRAIN LEVEE DISTRICT
UPDATE

West Shore Lake Pontchartrain Hurricane & Storm Damage Risk Reduction Project, St. James, St. John the Baptist, & St. Charles Parishes, Louisiana

Project Description & Scope

- The authorized project includes 18.5 miles of levee, pump stations, drainage structures, gated road crossings, railroad crossings, floodwalls, and utility relocations in St. John and St. Charles, and ring levees and associated features in St. James.

Project Funding

- \$760M was appropriated for the project as part of the Bipartisan Budget Act of 2018. This amount was intended to provide full funding for the project.
- In January 2022, \$3M in funds were appropriated for a West Shore Lake Pontchartrain General Reevaluation Report (GRR) focused on resiliency with up to \$450M in additional construction funds for resiliency set aside through disaster supplemental funding.
- In July 2023, The U.S. Army Corps of Engineers (USACE) updated a certified total project cost that determined approximately \$1.27B in additional funding will be required to deliver the project to the authorized elevations and to complete pump stations and drainage structures.
- To address the funding shortfall, \$450M in resiliency funds for WSLP were reprogrammed through the Consolidated Appropriations Act of 2024 for the construction of the authorized project; however, USACE determined these disaster-sourced dollars require a costshare.

- The Non-Federal Sponsor (NFS) is seeking application of \$400M in BBA18 contingency funds to go towards construction and making the reprogrammed \$450M fully federally funded.

Project Status - St. John and St. Charles Parishes

- USACE has issued construction contracts totaling \$445M for the following levee reaches: WSLP-101a, WSLP-102, WSLP-103, WSLP-104, WSLP-105, WSLP-106, WSLP-107, WSLP-108, WSLP-109, WSLP-110, and WSLP-114a.
- Contract award for WSLP-114 (Pump Stations) is postponed due to protest. USACE anticipates awarding the contracts for WSLP-114, WSLP-103a and WSLP-110a next fiscal year.

Project Status - St. James Parish

- St. James Parish, with the goal of long-term, sustainable flood risk reduction, has identified an alternative to the authorized Ring Levees.
- St. James Parish has progressed permitting and design of their preferred alignment, and USACE, the NFS, and St. James Parish have a consensus on how the St. James preferred alignment could potentially be implemented.
- Ensuring previously appropriated funds can be directed towards completing the WSLP project is an important milestone to provide the desired protection in St. James Parish.



Montz Drainage Structure at WSLP-102

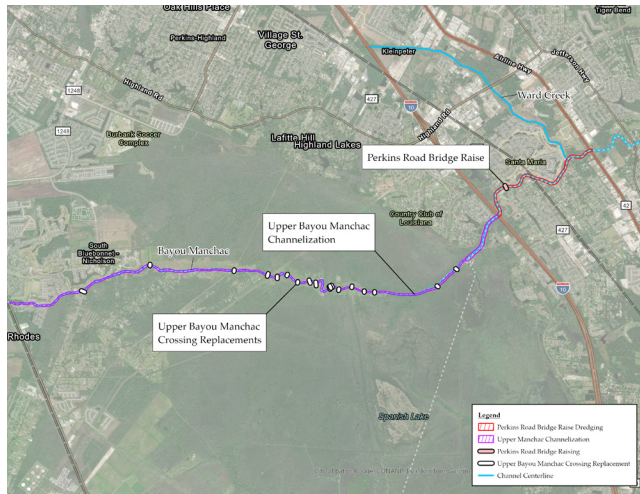


St. James Alternative Levee Alignment



Bayou Manchac Regional Flood Risk Reduction Project, Iberville, Ascension, & East Baton Rouge Parishes, Louisiana

The Bayou Manchac Basin is an approximately 169 square mile basin serving Ascension, East Baton Rouge, and Iberville Parishes. The three Parishes comprise the area that was hardest hit during the August 2016 floods which led to \$1.2 billion in federal funding for the State of Louisiana to address flooding concerns. The three parishes requested that PLD develop the Bayou Manchac Regional Flood Risk Reduction Plan to investigate several projects within the Manchac Basin for funding. The various project components as well as the component sponsors are listed in the table below. PLD is in the process of updating the original report with regional model data and is securing permits from the U.S. Army Corps of Engineers, the State Historic Preservation Office, and the Louisiana Department of Wildlife and Fisheries so that the project can be implemented once funding is obtained. PLD has requested funding from various agencies and programs, including the Louisiana Watershed Initiative, Statewide Flood Control, Capital Outlay, Flood Mitigation Assistance, Building Resilient Infrastructure and Communities, and the Department of Housing and Urban Development.

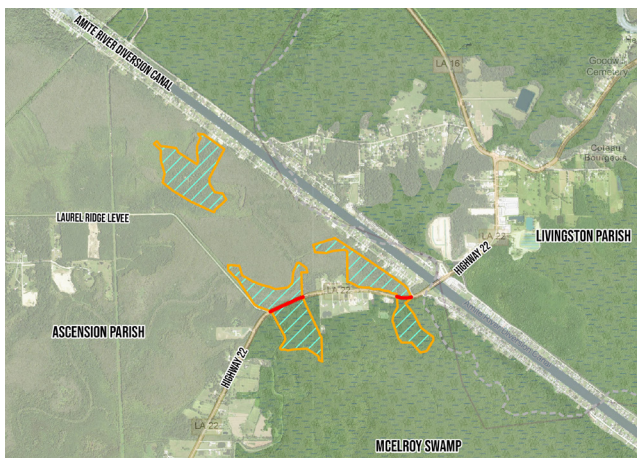


Project	Summary	Cost
Upper Bayou Manchac Channelization (PLD Project)	Clearing and snagging of Bayou Manchac from I-10 to its most upstream point on Highway 30 and excavation of Bayou Manchac from Alligator Bayou to the Interstate 10 crossing of Bayou Manchac. The project is in permitting and design. Construction is anticipated to begin in mid-2026.	\$2.89M
Upper Bayou Manchac Crossing Replacements (PLD Project)	Removal and replacement of 22 culvert crossings along Bayou Manchac from Highway 30 to Alligator Bayou. The project is in permitting and design. Construction is anticipated to begin in mid-2026.	\$2.2M
Perkins Road Bridge Raise (PLD Project)	Raising the existing Perkins Road Bridge to reduce occurrences of road inundation and impediments to flow of Bayou Manchac as well as excavation of Bayou Manchac from Interstate 10 to Airline Highway. The project is in permitting and preliminary design. Construction is anticipated to begin in 2027.	\$6.76M
Ward Overflow Channel (BREC Project)	Construction of an overflow weir and channel east of Ward Creek's existing outlet at Bayou Manchac. This channel will convey flow from Ward Creek to Bayou Manchac for rainfall events greater than a 10-year event, increasing flow conveyance from Ward Creek to Bayou Manchac. The channel will also be designed as a recreational channel during normal conditions.	\$5.48M
Lower Bayou Manchac Channel Improvements (East Baton Rouge Parish Project)	Excavation of Bayou Manchac from its confluence with the Amite River to Airline Highway.	\$27M

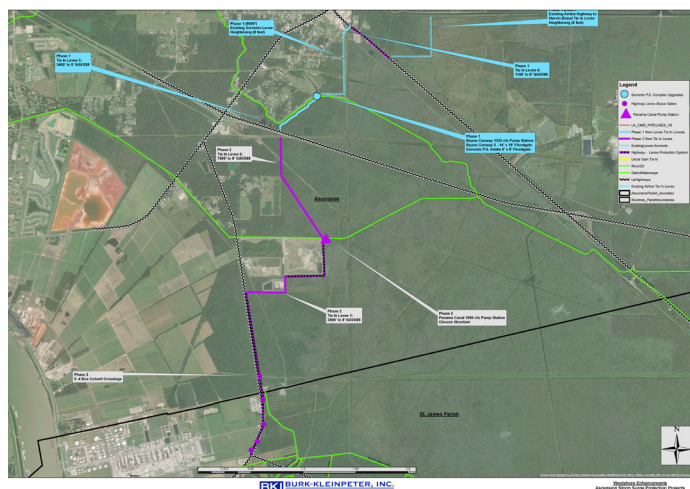


LA 22 Gapping Project, Louisiana Watershed Initiative, Ascension & Livingston Parishes, Louisiana

The LA 22 Gapping Project commenced as a master planning project which involved analysis of multiple projects that have a flood risk impact on the Lower Amite River Basin. Multiple concepts were developed based on old studies, stakeholder input, and new modeling information. The results of this effort showed a great need for gapping of LA 22 near the Amite River Diversion which was emphasized during the August flood of 2016. LA 22's alignment prevents water from flowing through the floodplain, causing a backwater event. This project includes the construction of two bridge structures along LA 22 and selective excavation within the floodplain to restore flow through the Amite River Diversion Canal Floodplain. This project will help reduce water surface elevation along the Amite River and improve the health of the wetlands located within the floodplain of the Amite River Diversion Canal. Pontchartrain Levee District received \$42M in funding through the Louisiana Watershed Initiative, and \$6.8M in Capital Outlay funds have been allotted for the project. The project is currently in the design and permitting phase. 90% plans were completed in April and are being reviewed by DOTD. The USACE permit is anticipated to be issued by early Fall 2025.



Ascension Parish Storm Surge Project, Ascension Parish, Louisiana



The Ascension Parish Storm Surge Protection Project will provide storm surge protection to the east bank of Ascension Parish. Project scope includes 2.8 miles of new earthen levee, 3 miles of upgrades to existing levees, and improvements to existing pump stations, including generators, fuel storage tanks, and stop logs. Ascension Parish Government has requested the addition of a 1,320 cfs pump station with three gravity drainage gates and a boatway on Bayou Conway and the installation of a new 1,650 cfs pump station with three gravity drainage gates on the Panama Canal. The project has been separated into two phases: Phase 1 consisting of work north of I-10 and Phase 2 consisting of work south of I-10.

This project is a joint effort between the Pontchartrain Levee District, the East Ascension Consolidated Gravity Drainage District 1, and the Louisiana Office of Facility Planning and Control Capital Outlay Program. The design team has completed work including rights of entry, topographic and bathymetric surveys, cultural resources investigations, and wetland delineations for the Phase 1 and Phase 2 areas. Hydrologic and hydraulic studies were performed for each phase of the project and established the pumping and gravity drainage requirements. Preliminary engineering design has been completed for both phases of the project. Engineering design for Phase 1 is 90% complete and is expected to be finalized in November 2025. The current Capital Outlay funding for the project is \$11.8M with a local match of \$3.9M for a total budget of \$15.7M.



September 2025

THE PONTCHARTRAIN LEVEE DISTRICT
UPDATE

Pontchartrain Levee District Board of Commissioners



Senecca D. Boudreaux, President
Representing St. James Parish

Matthew Butler
Representing East Baton Rouge Parish

Dr. Leander Shane Zanders, Sr.
Representing Iberville Parish

Randy T. Clouatre, Sr.
Representing Ascension Parish

Beverly J. Irvin
Representing Canadian National Railroad

Blaine J. Sheets, Vice President
Representing Canadian National Railroad

Aaron Pourciau
Representing St. Charles Parish

Charles J. "Chuck" Bazile III
Representing St. John the Baptist Parish

Kevin P. Hebert
At Large

Board Executive Staff

Monica Salins Gorman
Executive Director

Joseph Sevario
Executive Assistant to the Board

Dwight D. Poirrier
Special Counsel

Arlene Lee
Board Secretary

Mission

- To maintain the existing levee systems in a condition that will ensure their integrity and capability to withstand river stages and hurricane tidal surges, as anticipated by their design and condition;
- To improve, by construction or supporting construction by others, of new or enhanced levels of protection as design parameters change or higher levels of protection are authorized; and
- To anticipate weaknesses in the system as and before they develop, and to respond actively with necessary emergency measures when the levees are being subjected to river stages or hurricane tidal surges that would cause flooding within the jurisdiction of the Pontchartrain Levee District.

September 2025

Pontchartrain Levee District
2069 Railroad Ave.
P.O. Box 426
Lutcher, LA 70071
225-869-9721 fax 225-869-9723
www.leveedistrict.org

 Prepared by Civix
3300 West Esplanade Ave.
Suite 400
Metairie, LA 70002
504-304-2500 fax 504-304-2525
www.GoCivix.com