



September 2024

THE PONTCHARTRAIN LEVEE DISTRICT
UPDATE

West Shore Lake Pontchartrain Hurricane & Storm Damage Risk Reduction Project, St. James, St. John the Baptist, & St. Charles Parishes, Louisiana

Project Description & Scope

- The alignment is approximately 23 miles in length, consisting of 22 miles of levee and 1 mile of T-wall
St. Charles Parish = 0.5 miles
St. John Parish = 18.0 miles
St. James Parish = 4.5 miles
- The project includes pump stations, drainage structures, gated road crossings, railroad gates, utility relocations, culvert valves / gates, and raising / floodproofing of a limited number of structures.

Project Status

- The U.S. Army Corps of Engineers (USACE) has issued construction contracts totaling \$352M for the following levee reaches: WSLP-101a, WSLP-102, WSLP-103, WSLP-104, WSLP-105, WSLP-106, WSLP-107, WSLP-108, and WSLP-110.
- USACE anticipates awarding the contracts for WSLP-114a and WSLP-109 this fiscal year.
- Construction is complete on Access Roads in St. John the Baptist and St. Charles Parishes.

Project Funding

- \$760M appropriation for the project includes funding for real estate, design, construction, etc., authorized as part of the Bipartisan Budget Act of 2018.
- In January 2022, \$3M in funds were appropriated for a West Shore Lake Pontchartrain General Reevaluation Report (GRR) focused on resiliency with up to \$450M in additional construction funds for resiliency set aside.
- The \$450M in resiliency funds for WSLP were reprogrammed through provisions in the Consolidated Appropriations Act of 2024 for construction of the authorized project. This funding is needed to proceed with additional construction contracts for levees, pump stations, and drainage structures in St. John and St. Charles Parishes.
- Ensuring previously appropriated funds can be directed towards completing the WSLP project is an important milestone to eventually provide the desired protection in St. James Parish.
- The Non-Federal Sponsors (NFS) are seeking application of the \$400M in BBA18 contingency funds towards construction. In addition the NFS express their appreciation for the success of applying RESTORE Bucket 2 funds towards the non-Federal cost share.



Levee Construction at WSLP-110

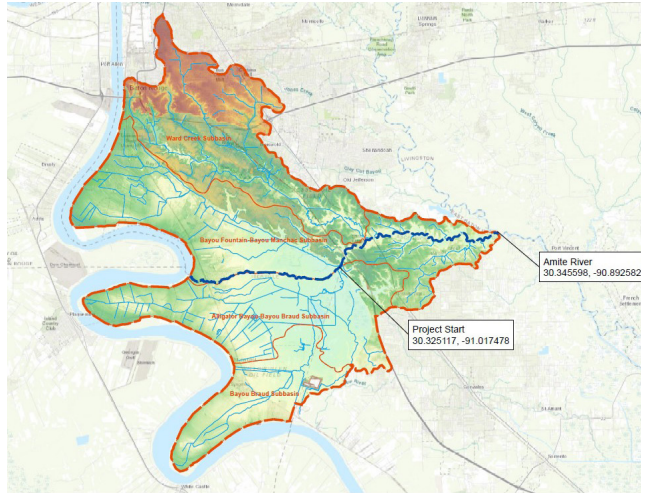


Levee Construction at WSLP-107



Bayou Manchac Regional Flood Risk Reduction Project, Iberville, Ascension, & East Baton Rouge Parishes, Louisiana

The Bayou Manchac Basin is an approximately 169 square mile basin serving Ascension, East Baton Rouge, and Iberville Parishes. The three Parishes comprise the area that was hardest hit during the August 2016 floods which led to \$1.2 billion in federal funding for the State of Louisiana to address flooding concerns. The three parishes requested that PLD develop the Bayou Manchac Regional Flood Risk Reduction Plan to investigate several projects within the Manchac Basin for funding. Phase 1A includes clearing and snagging of channel from Alligator Bayou to Amite River. Phase 1B includes five alternatives: clearing, snagging, dredging and culvert improvements between Nicholson and Alligator Bayou; Channelization between Alligator Bayou and Amite River; Perkins Road Bridge Replacement; Ward Creek Realignment; and Alligator Bayou Dredging. Phase 2 includes a regional detention project in Iberville Parish. The project has been modeled and is in the permitting process while awaiting funding to begin design. PLD has requested funding from various agencies and programs, including the Louisiana Watershed Initiative, Statewide Flood Control, Capital Outlay, Flood Mitigation Assistance, Building Resilient Infrastructure and Communities, and the Department of Housing and Urban Development.

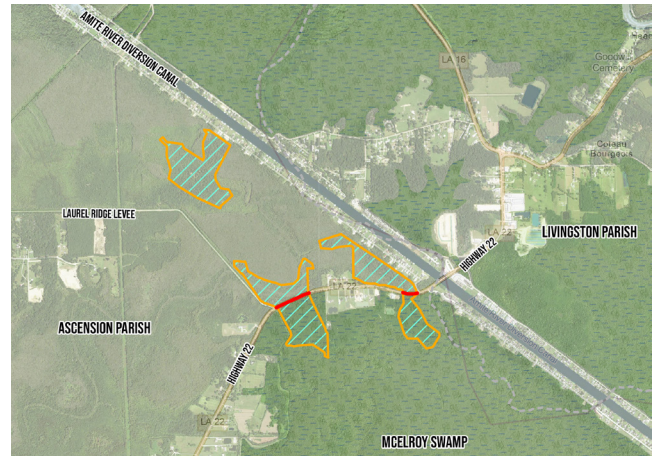


Project	Summary	Cost
Clearing and Snagging	Clearing and snagging of Bayou Manchac from its confluence with the Amite River to the Alligator Bayou Floodgate to remove debris and fallen trees from above and below the water surface	\$1.55M
Channelization Phase 1	Channel deepening from the Alligator Bayou Floodgates to the Amite River to establish a constant slope downstream and remove berms and siltation	\$41M
Channelization Phase 2	Removal of selective berms/siltations within Bayou Manchac from HWY 30 to Alligator Bayou and replacing structures to improve conveyance	\$3.7M
Perkins Road Bridge Raise	Raising of the existing Perkins Road Bridge to reduce occurrences of road inundation and impeding flow of Bayou Manchac	\$6.8M
Ward Creek Realignment	Constructing a new outlet east of its confluence with Bayou Manchac to improve conveyance and reduce backwater flow from Bayou Manchac	\$5.76M
Alligator Bayou Dredging	Channel deepening starting at the floodgate to its confluence the Bayou Paul Stream Restoration Project to improve conveyance	\$6.1M

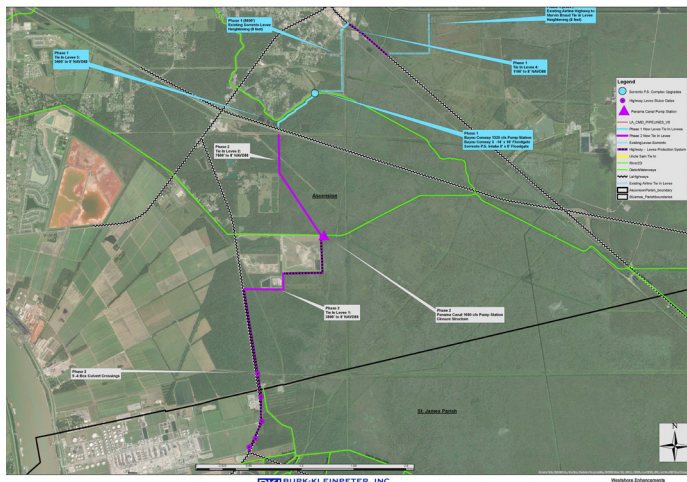


LA 22 Gapping Project, Louisiana Watershed Initiative, Ascension & Livingston Parishes, Louisiana

The LA 22 Gapping Project commenced as a master planning project which involved analysis of multiple projects that have a flood risk impact on the Lower Amite River Basin. Multiple concepts were developed based on old studies, stakeholder input, and new modeling information. The results of this effort showed a great need for gapping of LA 22 near the Amite River Diversion which was emphasized during the August flood of 2016. LA 22's alignment prevents water from flowing through the floodplain, causing a backwater event. This project includes the construction of two bridge structures along LA 22 and selective excavation within the floodplain to restore flow through the Amite River Diversion Canal Floodplain. This project will help reduce water surface elevation along the Amite River and improve the health of the wetlands located within the floodplain of the Amite River Diversion Canal. Pontchartrain Levee District received \$42 million dollars in funding through the Louisiana Watershed Initiative, and \$6.8 million in Capital Outlay funds have been allotted for the project. The project is currently in the design and permitting phase.



Ascension Parish Storm Surge Project, Ascension Parish, Louisiana



The Ascension Parish Storm Surge Protection Project will provide storm surge protection to the east bank of Ascension Parish. Project scope includes 2.8 miles of new earthen levee, 3 miles of upgrades to existing levees, and improvements to existing pump stations, including generators, fuel storage tanks, and stop logs. Ascension Parish Government has requested the addition of a 1,320 cfs pump station with three gravity drainage gates and a boatway on Bayou Conway and the installation of a new 1,650 cfs pump station with three gravity drainage gates on the Panama Canal. The project has been separated into two phases: Phase 1 consisting of work north of I-10 and Phase 2 consisting of work south of I-10.

This project is a joint effort between the Pontchartrain Levee District, the East Ascension Consolidated Gravity Drainage District 1, and the Louisiana Office of Facility Planning and Control Capital Outlay Program. The design team has completed work including rights of entry, topographic and bathymetric surveys, cultural resources investigations, and wetland delineations for the Phase 1 and Phase 2 areas. Hydrologic and hydraulic studies were performed for each phase of the project and established the pumping and gravity drainage requirements. Preliminary engineering design has been completed for both phases of the project. Final engineering design for Phase 1 began April 2024 and is expected to be completed in March 2025. The current Capital Outlay funding for the project is \$11.8M with a local match of \$3.9M for a total budget of \$15.7M.



September 2024

THE PONTCHARTRAIN LEVEE DISTRICT
UPDATE

Pontchartrain Levee District Board of Commissioners

Senecca D. Boudreaux, President
Representing St. James Parish

Blaine J. Sheets, Vice President
Representing Canadian National Railroad

Matthew Butler
Representing East Baton Rouge Parish

Aaron Pourciau
Representing St. Charles Parish

Percy Hebert, Jr.
Representing Iberville Parish

Allen J. St. Pierre, Sr.
Representing St. John the Baptist Parish

Randy T. Cloutre, Sr.
Representing Ascension Parish

Claude "Trey" Granier, III
At Large

Wardell Irvin
Representing Canadian National Railroad



Board Executive Staff

Monica Salins Gorman
Executive Director

Dwight D. Poirrier
Special Counsel

Joseph Sevario
Executive Assistant to the Board

Mission

- To maintain the existing levee systems in a condition that will ensure their integrity and capability to withstand river stages and hurricane tidal surges, as anticipated by their design and condition;
- To improve, by construction or supporting construction by others, of new or enhanced levels of protection as design parameters change or higher levels of protection are authorized; and
- To anticipate weaknesses in the system as and before they develop, and to respond actively with necessary emergency measures when the levees are being subjected to river stages or hurricane tidal surges that would cause flooding within the jurisdiction of the Pontchartrain Levee District.

September 2024

Pontchartrain Levee District
2069 Railroad Ave.
P.O. Box 426
Lutcher, LA 70071
225-869-9721 fax 225-869-9723
www.leveedistrict.org

 Prepared by Civix
3300 West Esplanade Ave.
Suite 400
Metairie, LA 70002
504-304-2500 fax 504-304-2525
www.GoCivix.com