



September 2022

THE PONTCHARTRAIN LEVEE DISTRICT

UPDATE

West Shore Lake Pontchartrain Hurricane & Storm Damage Risk Reduction Project, St. James, St. John the Baptist, & St. Charles Parishes, Louisiana

Project Description & Scope

- The alignment is approximately 23 miles in length, consisting of 22 miles of levee and 1 mile of T-wall
St. Charles Parish = 0.5 miles
St. John Parish = 18.0 miles
St. James Parish = 4.5 miles
- The project includes pump stations, drainage structures, gated road crossings, railroad gates, utility relocations, culvert valves / gates, and raising / floodproofing of a limited number of structures.

Project Funding

- \$760M appropriation for the project includes funding for real estate, design, construction, etc., authorized as part of the Bipartisan Budget Act of 2018.
- In January 2022, \$3M in funds were appropriated for a West Shore Lake Pontchartrain General Reevaluation Report (GRR) focused on resiliency.
- Pending completion of a report with an economically justified and environmentally acceptable plan, up to \$450M in additional construction funds have been set aside for the WSLP Project.

Project Status

- Current construction contracts issued by the U.S. Army Corps of Engineers (USACE) include contracts to stockpile clay and sand materials from the Bonnet Carré Spillway, construction of Access Roads, and two sand placement contracts.
- Access Roads B, D, F, G, and S are under construction in St. John the Baptist and St. Charles Parishes. Access Roads A, C, J, and P have been completed.
- Construction of the WSLP-101 Test Section is complete.
- Right of Way acquisitions for the portion of levee to be constructed by the Corps of Engineers in St. John the Baptist and St. Charles Parishes is complete.
- USACE is currently undertaking survey work for the St. James Ring Levees.



The WSLP project groundbreaking took place on July 26, 2021

"The importance of this project is underscored by Congress' decision to provide upfront funding through the Bipartisan Budget Act of 2018 and it shines a light on the importance of Louisiana to the nation. You do not engage in flood risk management in South Louisiana if you are afraid of challenges and unforeseen obstacles. I know that we have the right 'team of teams' in place and when construction is complete, we will have accomplished an effort that will be a model for future flood risk management efforts in South Louisiana. That being a hybrid system that uses every tool in the box, combining nonstructural and structural features to deliver risk reduction across a large project area."

*~ Colonel Stephen Murphy, Commander & District Engineer
New Orleans District, U.S. Army Corps of Engineers*



Ascension Parish Storm Surge Project, Ascension Parish, Louisiana

The Ascension Parish Storm Surge Protection Project will provide storm surge protection to the east bank of Ascension Parish. Project scope includes 2.8 miles of new earthen levee, 3 miles of upgrades to existing levees, the addition of 120 cfs of pumping capacity to the Sorrento Pump Station on Bayou Conway, the installation of a new 320 cfs pump station on the Panama Canal, other pump stations improvements, and four new flood gates. The project has been separated into two phases: Phase 1 consisting of work north of I-10 and Phase 2 consisting of work south of I-10.

This project is a joint effort between the Pontchartrain Levee District, the East Ascension Consolidated Gravity Drainage District 1, and the Louisiana Office of Facility Planning and Control Capital Outlay Program. The Louisiana Office of Facility Planning and Control authorized the start of the project in January 2022. The design team has begun work including design coordination, rights of entry, topographic and bathymetric surveys, geotechnical investigations and analysis, cultural resources investigations, and wetland delineations for the Phase 1 and Phase 2 areas.

Approved & Pending Project Credits & PLD Cash Contributions

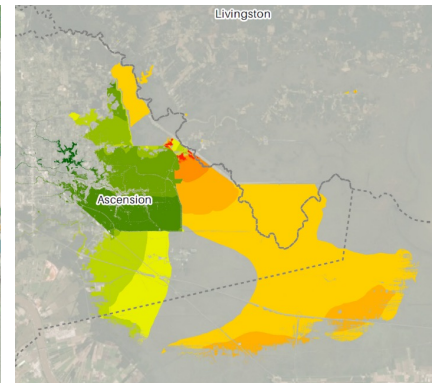
Based on a 2016 interim accounting of the Lake Pontchartrain, Louisiana and Vicinity (LPV), Hurricane Protection Project, St. Charles Parish as conducted by USACE, PLD has made excess cash contributions to USACE of \$6.7 million. Additionally, PLD has accumulated project credits (USACE approved and pending) of \$17.1 million. PLD is seeking appropriations for excess cash contributions and accumulated project credits to be used as a funding source for other federal and local projects within PLD's six parish jurisdiction. Project credits include expenditures for the LPV project approved by USACE between 2011 and 2016.

Description	Approved for Credit
Corps Approved Project Credits -Project Management and Lands, Easements Rights of Way, Relocations and Disposal Areas (LERRDs)	\$10,579,810.39
Project Credits Pending Corps Approval-Project Management, LERRD's and Construction	\$6,529,682.37
Total Project Credits - Approved and Pending	\$17,109,492.76
PLD's 30% Share of Project Costs	\$20,855,479.05
PLD's Actual Cash Contributions to Corps	\$29,081,131.16
Excess Cash Contributions made by PLD	\$8,225,652.11
Corps Refund issued in 2016	\$1,510,919.73
PLD Excess Contributions to Corps	\$6,714,732.38
Total PLD Project Credits (Approved and Pending) and Excess Cash Contributions	\$23,824,255.14

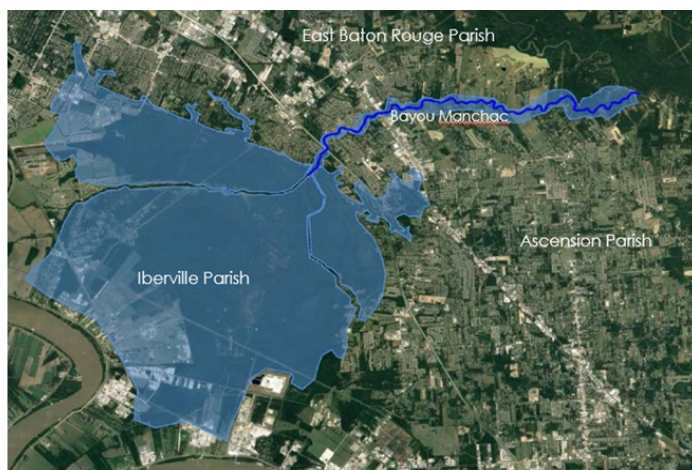


LA 22 Gapping Project, Louisiana Watershed Initiative, Ascension & Livingston Parishes, Louisiana

The LA 22 Gapping Project commenced as a master planning project which involved analysis of multiple projects that have a flood risk impact on the Lower Amite River Basin. Multiple concepts were developed based on old studies, stakeholder input, and new modeling information. The results of this effort showed a great need for gapping of LA 22 near the Amite River Diversion which was emphasized during the August Flood of 2016. This project restores flow to McElroy Swamp by placing structures through LA 22 near the Diversion Canal. This project will help reduce water surface elevation along the Amite River and improve the health of the wetlands located within the floodplain of the Amite River Diversion Canal. Pontchartrain Levee District received full funding of \$42 million dollars through the Louisiana Watershed Initiative. The project is currently in the preliminary design phase, and PLD will move forward with obtaining project permits in early 2023.



Bayou Manchac Regional Flood Risk Reduction Project, Iberville, Ascension, & East Baton Rouge Parishes, Louisiana



The Bayou Manchac Regional Flood Risk Reduction Project is in the planning phase and will benefit three Parishes: Iberville, Ascension, and East Baton Rouge. The project scope agreed to by the three Parishes and Pontchartrain Levee District involves three phases: clearing and snagging, channelization/dredging (including five alternatives) and large-scale projects (including a pump station and regional detention) to enhance drainage and provide flood risk reduction for the area. The alternatives evaluation report is currently being finalized which includes preliminary modeling, exhibit preparation, cost estimation, and project summaries to be utilized by PLD to apply for funding during Round 2 of the Louisiana Watershed Initiative.



September 2022

THE PONTCHARTRAIN LEVEE DISTRICT
UPDATE

Pontchartrain Levee District Board of Commissioners

Senecca D. Boudreaux, President
Representing St. James Parish

Blaine J. Sheets, Vice President
Representing Canadian National Railroad

Matthew Butler
Representing East Baton Rouge Parish

Aaron Pourciau
Representing St. Charles Parish

Percy Hebert, Jr.
Representing Iberville Parish

Allen J. St. Pierre, Sr.
Representing St. John the Baptist Parish

Randy T. Clouatre, Sr.
Representing Ascension Parish

Claude "Trey" Granier, III
At Large

Leonard C. Irvin, Sr.
Representing Canadian National Railroad



Board Executive Staff

Monica Salins Gorman
Executive Director

Dwight D. Poirrier
Special Counsel

Joseph Sevario
Executive Assistant to the Board

Mission

- To maintain the existing levee systems in a condition that will ensure their integrity and capability to withstand river stages and hurricane tidal surges, as anticipated by their design and condition;
- To improve, by construction or supporting construction by others, of new or enhanced levels of protection as design parameters change or higher levels of protection are authorized; and
- To anticipate weaknesses in the system as and before they develop, and to respond actively with necessary emergency measures when the levees are being subjected to river stages or hurricane tidal surges that would cause flooding within the jurisdiction of the Pontchartrain Levee District.

September 2022

Pontchartrain Levee District
2069 Railroad Ave.
P.O. Box 426
Lutcher, LA 70071
225-869-9721 fax 225-869-9723
www.leveedistrict.org

 Prepared by Civix
3300 West Esplanade Ave
Suite 400
Metairie, LA 70002
504-304-2500 fax 504-304-2525
www.GoCivix.com